

Research Data Management Librarian Academy (RDMLA)

About RDMLA

The RDMLA is a global **professional development program** for librarians and other professionals who work in a **research-intensive environment**.

The curriculum focuses on the **knowledge and skills** needed to collaborate effectively with researchers on **data management**. Learners will gain the **increased capacity** to address the **growing RDM needs** of their institutions.

Unique Partnership

RDMLA is a **unique partnership** between a library and information sciences academic program, academic health sciences and research libraries, and Elsevier, who financially supported the project.



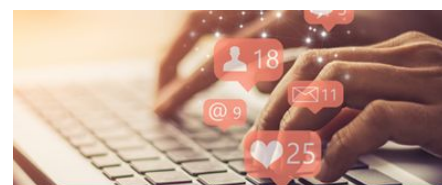
Course Curriculum



UNIT ONE
Foundations of RDM



UNIT TWO
Navigating Research Culture



UNIT THREE
Advocating for RDM in Libraries



UNIT FOUR
Launching Data Services



UNIT FIVE
Project Management and Assessment



UNIT SIX
Data Analysis and Visualization Tools



UNIT SEVEN
Coding Tools



UNIT EIGHT
Platform Tools

CE Credits Assessment Test

The **CE credits assessment test** offers interested learners the opportunity to **earn three CE credits** from Simmons SLIS.

The optional test is **now available** for learners who have completed the entire RDMLA course and have paid the nominal CE administrative fee. Successful test-takers will receive a **certificate recognizing the credits**.



Next Steps

- ✓ **Expand** to include three new units
- ✓ **Improve RDMLA design** based on UX study results
- ✓ Explore international collaboration for **translation** of RDMLA to **other languages**

Contact Us

Website: rdmla.github.io

Email: rdmla.help@gmail.com

Social Media: [@The_RDMLA](https://twitter.com/The_RDMLA) [@TheRDMLA](https://facebook.com/TheRDMLA)

Community

Leadership:

- Elaine Martin - Harvard Medical School
- Rong Tang - Simmons University
- Jean P. Shipman - Elsevier (retired)

Project Staff:

- Ashley Thomas - RDMLA Librarian, Harvard Medical School
- Zhan Hu - Project Manager, Simmons University

Simmons University SLIS CE Provision:

- Sanda Erdelez - SLIS Director, Simmons

Faculty:

- **Harvard Medical School:** Elaine Martin, Scott Lapinski, Roger Vargas
- **Harvard Library:** Julie Goldman, Ceilyn Boyd, Rachel Lewellen, Alison Thornton, Danielle Adams, Suzanne Wones
- **Simmons University:** Danielle Pollock
- **Tufts University:** Rebecca Morin, Berika Williams, Eric Albright
- **Northeastern University:** Jen Ferguson
- **Boston University:** Philip Espinola Coombs, Mary Blanchard
- **Brown University:** Andrew Creamer
- **MCPHS University:** Richard Kaplan

